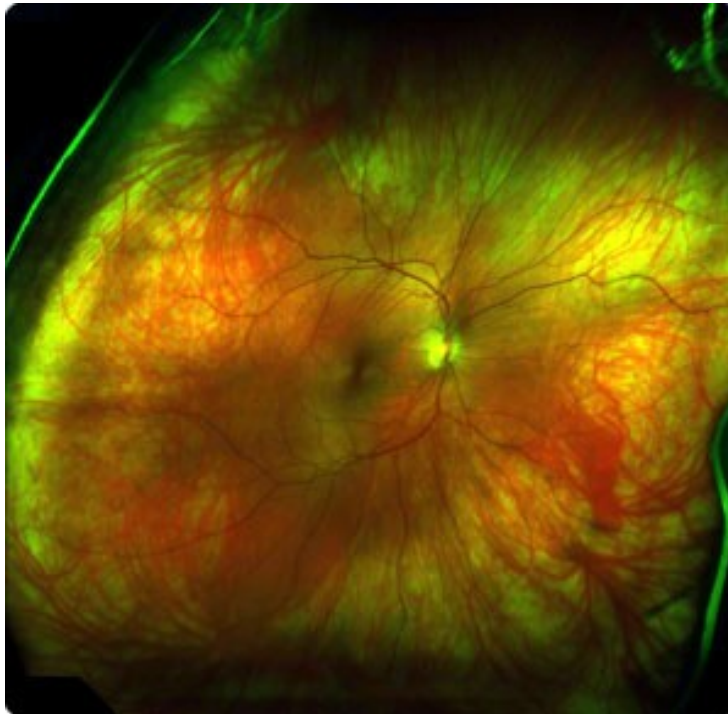


Optomap Retinal Exam

The Optomap Retinal Exam enables us to perform a comprehensive retinal evaluation quickly and painlessly. It represents an alternative to dilation for most patients.

Thorough retinal evaluation aids in the early detection of such problems as *macular degeneration, glaucoma, diabetic retinopathy, cancer in the eye*, and a number of other ocular maladies.

As a screening exam, we recommend the **Optomap** for *all patients over 40 once a year*. For those *under 40*, we recommend it *every 2 years* unless there is a family history of eye disease in which case every year is preferred. The doctor will review the images with you after your examination and discuss any findings.



Benefits:

- 1) Fast and very easy without the need for pupil dilation in most patients
- 2) Maps an in-depth, complete view of the back of the eye (retina)
- 3) Creates a permanent record for your medical file for monitoring ocular disease and tracking any changes in retinal health over time
- 4) Helps the doctor to detect ocular changes from high blood pressure and diabetes

Who is it for?

- 1) Patients of all ages for a comprehensive view of the retina usually without the need for dilating eye drops.

If during the course of the examination, any abnormality is uncovered, a dilated retinal evaluation may still be necessary.

The charge for the **Optomap** retinal exam is **\$35.00**, and it is not typically covered by most insurance plans.

If you have eye disease, the **Optomap Plus** is performed as ordered by your doctor. This type of retinal exam is considered medically necessary and is thus usually covered by Medicare and other private insurance.

() YES, I wish to have the **Optomap Exam**

Signature: _____

Date: _____